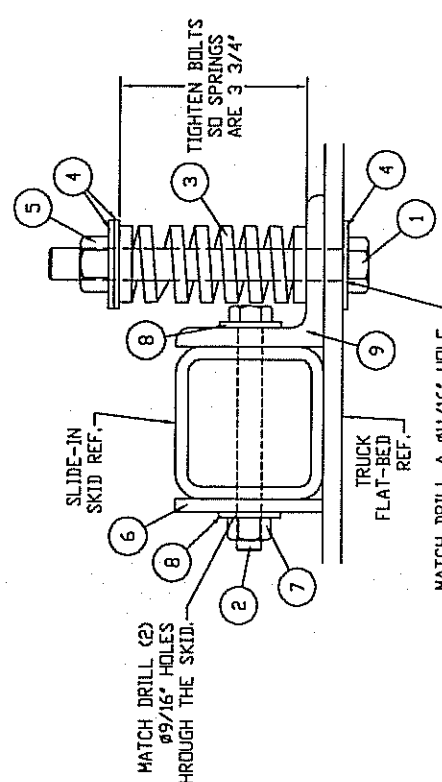
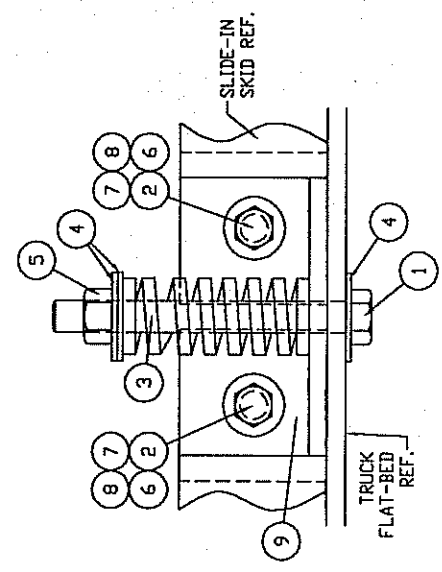


ITEM	QTY	PART #	DESCRIPTION
1	2	103065	HEX HEAD BOLT, 5/8"-11NC (GR 5) ZP - 6' LG.
2	6	103031	HEX HEAD BOLT, 1/2"-13NC (GR 5) ZP - 4 1/2' LG.
3	2	102499	SPRING, YELLOW (CALUMET) 4' LG
4	6	103604	WASHER, FLAT 5/8" (ZP)
5	2	103974	NUT, LOCK 5/8"-11UNC CROWNLOCK (ZP)
6	6	801130	WEIGHT DISPLACEMENT WASHER
7	6	103404	NUT, LOCK 1/2"-13UNC (ZP)
8	12	103603	WASHER, FLAT 1/2' (ZP)
9	2	801129A1	FLAT BED ANGLE MOUNTING BRACKET



FRONT MOUNT (2) REQUIRED



REAR MOUNT (2) REQUIRED

INSTALLATION NOTES:  
 1. MOUNT REAR MOUNTS (NO SPRINGS) ON EACH SIDE AS FAR BACK AS POSSIBLE.  
 2. MOUNT FRONT MOUNTS ON EACH SIDE AS FAR FORWARD AS POSSIBLE.  
 3. CHECK FOR INTERFERENCE WITH TRUCK FRAMING PRIOR TO DRILLING

TSAI2

**IMPERIAL INDUSTRIES INCORPORATED**  
 IMPERIAL-CALUMET DIVISION OF VALSAUL TILE, INC.

DRAWN BY: RSP      DATE: 7-9-13      SCALE: 1/4" = 1'  
 CHECKED BY:      DATE:      REVISION: 0

DRAWING NAME: S300A & S450A \* 950 ~ U.S.D  
 FLAT-BED MOUNTING KIT

REFERENCE: 800539      DRAWING NUMBER: 801129.A

for Alum B Steel → *Stainless Steel ⇒ MOUNT #*

REV.	BY	DATE	DESCRIPTION