

MZ Pressure Relief Valves



Vacuum Relief Valve

Size	Part #	Description
1½"	1035-0000 MZ	Vacuum Relief - Poly Bell Housing - 1½" Male NPT Threads 370 CFM

SPECIFICATIONS

DN	1½"
P(BAR)	-0,3 ÷ -0,8
P(PSI)	-4,3 ÷ -11,6
T °C	-15 +60



DIMENSIONS

Ø"	1½"
Ø1	1.61"
H	4.45"
h	0.59"
L	2.64"



Setting Instructions

- Remove the cap (1) from the adjusting bell (2) by using the point of a screwdriver in the groove.
- Loosen the jam nut (3) by holding the adjusting bell firmly (2).
- Adjust the pressure on the spring by turning the adjusting bell (2). Turn clockwise to increase the pressure and turn counterclockwise to reduce it. During this operation it is not necessary to hold the screwdriver firmly against the rod since the resistance of the spring is sufficient not to rotate the rod itself.
- When done, tighten the jam nut (3) holding the adjustment bell (2). The nut must be tightened with a torque of 10 Nm (at least). Press the cap (1) on firmly to the adjustment bell (2).



Brass Pressure Relief

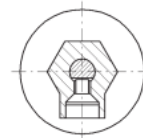
Size	Part #	Description
1¼"	1048-0000 MZ	Pressure Relief Valve 2", 155 CFM, Male NPT Threads
1½"	1049-0000 MZ	Pressure Relief Valve 2", 230 CFM, Male NPT Threads
2"	1050-0000 MZ	Pressure Relief Valve 2", 300 CFM, Male NPT Threads
2½"	1051-0000 MZ	Pressure Relief Valve 2", 300 CFM, Male NPT Threads

SPECIFICATIONS

DN	1¼" - 2"	2½"
P(BAR)	0,3 ÷ 0,5	0,2 ÷ 1,0
P(PSI)	4 ÷ 22	3 ÷ 14,5
T °C	-15 +60	



YES

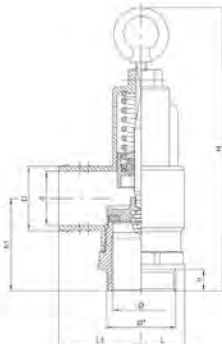


NO



DIMENSIONS

Ø"	1¼"	1½"	2"	2½"
Ø1	1.25"	1.5"	1.85"	2.6"
d	1.3"	1.45"	1.7"	2.3"
D	1.5"	1.7"	1.9"	2.6"
h	0.55"	0.59"	0.62"	0.62"
h1	1.8"	1.9"	2"	2.8"
H	7.7"	7.7"	7.7"	7.3"
L	1.1"	1.2"	1.4"	1.8"
L1	2.1"	2.4"	2.5"	3.3"



Setting Instructions

- After loosening the anti-rotation screw (1), turn the top ring (3) to increase (clockwise rotation) or decrease (counterclockwise rotation) the pressure setting.
- When you have reached the desired pressure, you must verify that the position of the rod (2) lines up with the anti-rotation screw (1). Otherwise, it will be necessary to slightly rotate the top ring (3) until reaching the exact position.
- IMPORTANT:** When you have finished setting, please verify that the rod cannot turn, but can only slide vertically.
- DO NOT REPLACE** for any reason the standard anti-rotation screw with any other type of screw or blocking systems; use exclusively Metaltecnica spare parts.

